



Operational update

We are now entering our sixth year of operation and partnership with Suffolk County Council.

In 2019, we put 265,390 tonnes of waste to good use and exported 164,116 megawatt hours of electricity to the national grid, enough to power over 35,000 homes. We recovered 47,000 tonnes of bottom ash to be used as an aggregate in the construction industry and another 9,000 tonnes of metal for recycling.

Shutdowns are a normal part of operational life at energy-from-waste facilities and in Suffolk, we have two per year. During our 2019 spring shutdown, as well as the general cleaning and maintenance that is carried out each shutdown, we replaced the cope hoods, which are the circular cones on top of the chimneys. The old cope hoods were made from mild steel and had corroded due to five years of exposure to the weather. The new cope hoods are made from stainless steel which will be more resistant. The corrosion from the old cope hoods caused a rust mark to form on one of the chimneys. This is due to be painted or cleaned during the 2020 spring shutdown.



Putting Suffolk's waste to good use

Visitor centre update

In 2019, we welcomed 1,368 visitors to the facility from a range of educational groups. Each group has the opportunity to discover more about the story of waste in Suffolk with a presentation, a tour of the facility and the chance to explore the activities and information in our purpose-built visitor centre.

We're particularly proud of our education visits from primary schools, secondary schools, colleges and youth groups, such as Brownies and Cubs. We provide age-appropriate educational activities for all visitors from age seven and can tailor visits to meet the needs of individual groups. We've even been awarded a Learning Outside the Classroom Quality Badge for our commitment to sustaining high-quality learning outside school.

Interested in booking your school, society or club in for a visit? Contact us at suffolkefw.uk@suez.com.

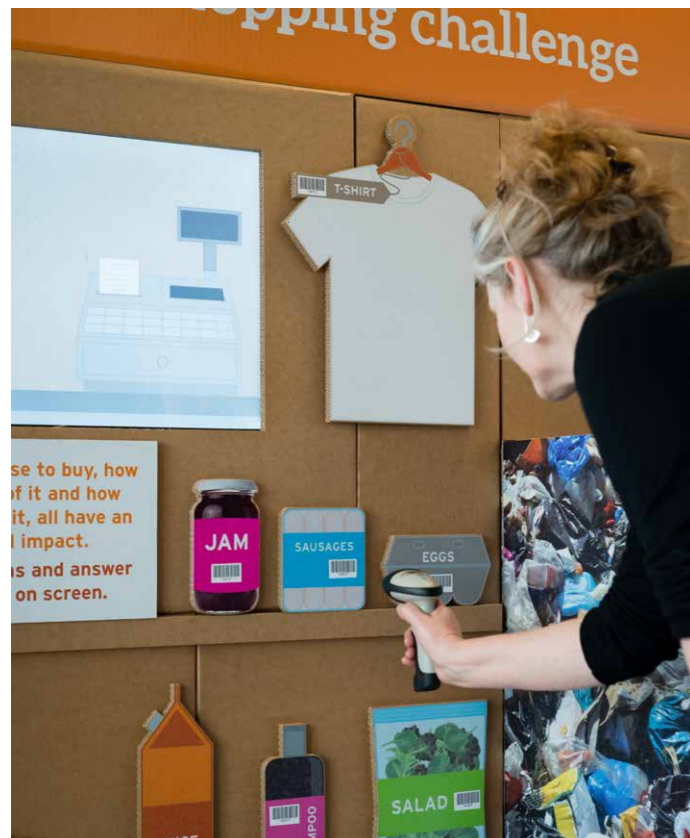
If you want to visit as an individual or small group, please get in touch via the email address above and register for one of our monthly open days.



Plans to process more waste

In spring 2019, we announced plans to process more waste at the Suffolk energy-from-waste facility, increasing the amount of waste accepted from 269,000 to 295,000 tonnes per year. We have now received the necessary permissions from the planning authority and the Environment Agency to allow this additional waste, which will enable us to use Suffolk's award-winning facility to its full potential throughout 2020.

The facility only accepts residual waste from households and businesses in the east of England, around 75% of which comes from Suffolk, and the additional waste will continue to come from this area. The appearance and operation of the facility will remain the same, but there will be a small increase in lorry movement to 95 trucks per day compared to the current 87 trucks per day.



Out in the community

HERITAGE OPEN DAYS 2019



On 14 September 2019, we took part in the national Heritage Open Days scheme, welcoming visitors from across the county keen to find out how the facility plays its part in the story of waste in Suffolk. Heritage Open Days is an annual week-long event that sees a variety of buildings open their doors to celebrate heritage, community and history.

Visitor's were able to speak to employees from SUEZ recycling and recovery UK and Suffolk County Council about the facility and its role in



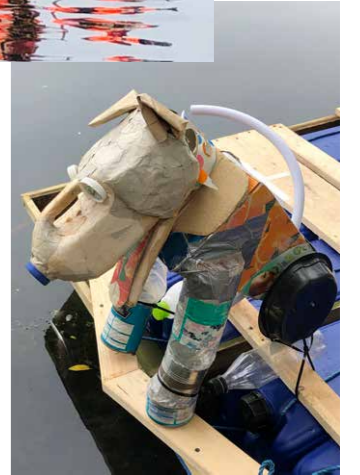
managing waste in the county, visit the control room and visitor centre and sign up to guided tours of the facility. One-hundred-and-twenty people took this opportunity to see first-hand what happens to their household waste in Suffolk. Our team had a great time on the day and we're already looking forward to the 2020 Heritage Open Days.

For more information about Heritage Open Days, visit www.heritageopendays.org.uk.



NEEDHAM RAFT RACE

In June, employees from the energy-from-waste facility entered the Needham Raft Race with a recycled raft made from reused waste materials from the facility.



Old pallets were used for the structure, and large plastic bottles provided buoyancy. We even borrowed Rebel the recycled dog from the visitor centre.

After several lengths of the on-site pond as practice, we came first in our heat and finished second place overall on the day.

FELIXSTOWE BEACH CLEAN

In late August, SUEZ employees were joined by family and friends to take part in a litter pick along Felixstowe beach and promenade. It was a busy summer's day, but we managed to weave through the crowds and collect over 40 kilograms of litter.

The litter pick formed part of the #suez4ocean campaign, which encourages SUEZ employees across the globe to organise beach and waterway clean-ups in their local area. To date, the campaign has mobilised over 2,300 people to collect over 68 tonnes of litter.

For more information about the initiative, visit www.suez4ocean.com.



Bee hives

The Suffolk energy-from-waste facility is home to a large colony of bees, situated in our wildflower meadow. The meadow has proved an ideal location for the colony which has grown from 60,000 to more than 200,000 across three hives.

The bees are managed by a local beekeeper who recently invited members of our team to swap their hardhats and hi-vis jackets for beekeeping suits to see the working bees in action. We've even been treated to some honey from the hives.

With bee populations in decline across the UK, we're happy to be able to offer these bees a safe home so they can pollinate the local land.

SUEZ Communities Trust

The SUEZ Communities Trust provides funding for community and environmental projects through the Landfill Communities Fund and Scottish Landfill Communities Fund, distributing funds contributed by SUEZ recycling and recovery UK. Up to £50,000 can be awarded to projects within three miles of a SUEZ site, provided the project meets the qualifying conditions.

Since 2012, more than £500,000 has been awarded to projects local to the Suffolk energy-from-waste facility.

For more information about the SUEZ Communities Trust, including how to apply, visit www.suezcommunitiestrust.org.uk.